

5 Reasons You Should Migrate Your Exchange Mailbox to Office 365



Cloud computing promises greater flexibility and accessibility for companies looking to stay competitive, support remote work, and drive innovation. However, some organizations hesitate to make the switch, citing concerns about security and [migration complexity](#). Consider several compelling reasons to migrate your Exchange mailbox to Office 365.

1. Improved Collaboration and User Experience

Office 365 delivers a suite of integrated productivity tools designed to facilitate seamless collaboration from any location, at any time. With an increasing business dependence on remote work, this flexibility proves critical in driving efficiency and creativity. And tools like [Microsoft Teams](#) break down barriers by strengthening real-time communication.

In addition to anytime/anywhere access to email and other critical business applications, Office 365 subscribers benefit from continuous updates and new features. Thus, they always have access to the latest technology, without the need for disruptive and costly updates. Users also benefit from an intuitive interface, easily managing mailboxes and calendars from day one.

2. High Reliability Minimizes Work Disruptions

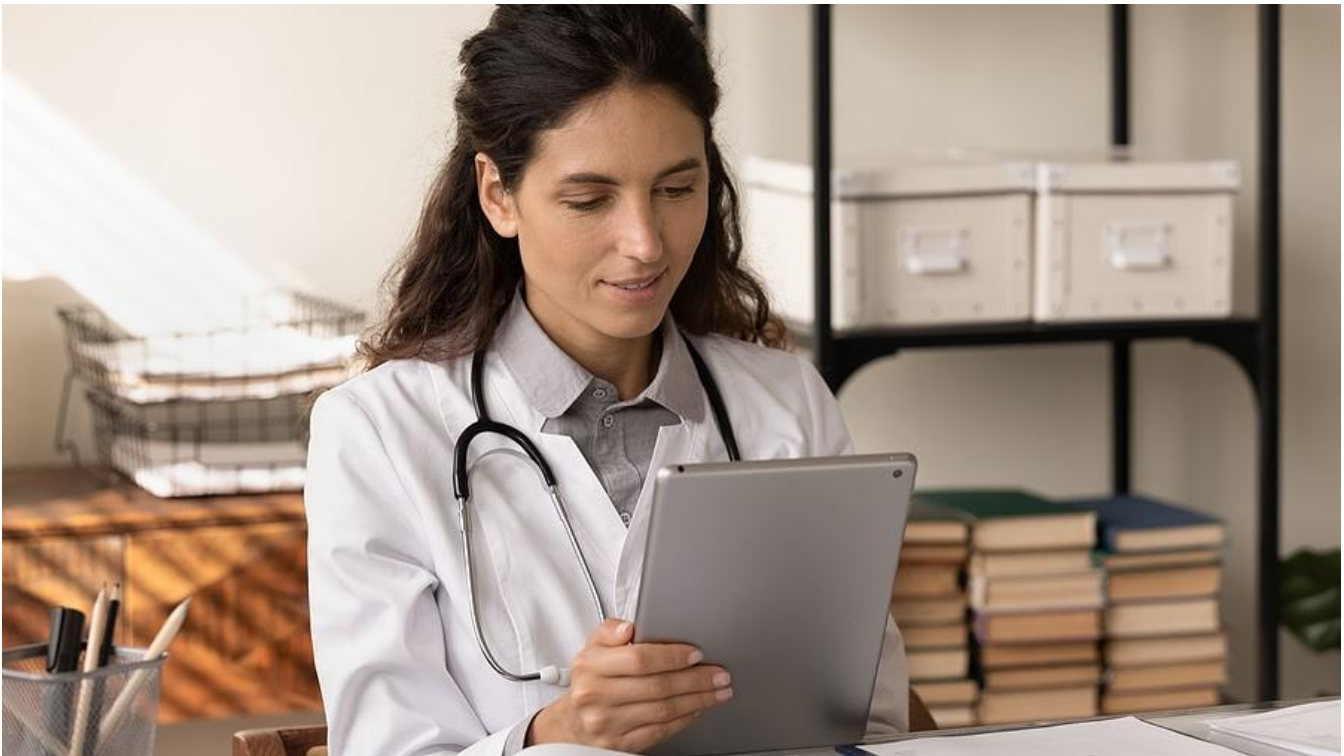
Microsoft makes high availability and uptime a priority for Office 365 services by employing several key strategies:

- Active/active design – Microsoft services ensure load balancing and redundancy across multiple, geographically dispersed data centers. Thus, multiple instances of the service are always available to respond to user requests. And data replication delivers reliability even in the event of catastrophes, data corruption, or hardware failures.
- Planned maintenance – Microsoft typically schedules routine maintenance and service updates during historically low service usage times. For planned maintenance, customers receive advance notifications. And when rare unplanned service incidents occur, Microsoft notifies customers promptly.

Uptime data transparency – For the last three quarters of 2023, Microsoft maintained an uptime consistently above 99.99 percent.

3. Enhanced Security and Compliance

Some organizations, particularly in highly regulated industries, worry about the safety of their sensitive information. However, Microsoft takes data security and compliance very seriously. And Office 365 includes [enhanced security features](#) that protect against threats and help maintain data compliance.



For example, Microsoft Defender provides unified security across endpoints, email, IoT devices, cloud apps, and more. Further, Microsoft Entra streamlines identity and access management, protecting critical business and personal data from unauthorized access.

Microsoft Purview adds powerful data compliance features, as well. For instance, data loss prevention features guard against inappropriate or unintentional sharing of sensitive data. And double-key encryption protects data both in transit and at rest.

4. Cost Efficiency Helps the Bottom Line

While migrating to Office 365 does involve upfront costs, migration can deliver substantial long-term savings. For instance, companies save on the costs associated with running and maintaining physical services. Additionally, the subscription-based model eliminates the need for capital expenditures and creates budget consistency.

Office 365 also delivers important scalability and flexibility, accommodating business growth and changing needs. Because companies can easily add or remove users and services as needed, they only pay for what they use. By contrast, scaling up in on-premises Exchange often means investing in both additional hardware and licenses.



5. Streamlined Operations Enable Strategic Focus

Maintaining an on-premises Exchange server requires significant IT resources, from hardware maintenance to software updates. By migrating to Office 365, companies reduce the burden on their IT departments, shifting the responsibility for server maintenance, updates, and much of the infrastructure security to Microsoft.

Office 365 streamlines the remaining administrative tasks, allowing IT to manage hundreds of user accounts easily through a user-friendly interface. And companies have easy access to Microsoft support, either directly through Microsoft or through a Microsoft partner. Easing administrative tasks frees up IT staff to focus instead on strategic initiatives.

Migrate Your Exchange Mailbox to Office 365 Headache-Free

Organizations considering migrating to Office 365 should plan carefully to ensure a smooth transition that minimizes disruption to daily operations. This involves first asking the right questions to determine what should move to the new system, what time and resources the migration will require, what customizations the new system should accommodate, and so forth.

Another key determinant of migration success involves choosing the right migration method. Typically, partnering with a migration expert such as Messaging Architects delivers the tools and skillsets necessary to ensure a seamless migration process. Our engineers have accomplished hundreds of successful [Exchange to Office 365 migrations](#).